



## Fly Glastonbury Heliport - 2023

<b>Operator:</b>	Polo Aviation Limited Urchinwood Manor Congresbury Bristol BS49 5AP	<b>C:</b>	Glastonbury Operations
		<b>T:</b>	+44 (0) 1934 877 000
		<b>E:</b>	<a href="mailto:Mail@poloaviation.com">Mail@poloaviation.com</a>
		<b>W:</b>	<a href="http://www.poloaviation.com">www.poloaviation.com</a>

**Dates of Operation:** Wednesday 21<sup>st</sup> June – Monday 26<sup>th</sup> June 2023

08:00 – 20:00 Local (Mon 08:00 to 14:00) Out of hour's operation available by prior arrangement only,

**NOTE:** The Police and The Festival Organisation have stipulated that no movements will be permitted between 00:30 and 08:00hrs

**Air Traffic Service:** Please operate at Pilots discretion using blind calls on Safety com frequency referring to "Glastonbury Helipad"

Frequency: Safety Com 135.480

**Heliport Location:** Position: 51° 09.67 North  
002° 33.82 West  
OS Map 183 ST605404  
<https://what3words.com/tradition.rejects.crass>  
2-Miles South West Shepton Mallet

**Runway:** Orientation: 09 / 27  
Length: 300 Metres x 30 Metres  
Elevation: 335 Feet AMSL  
Surface: Grass

**Fire Cover:** To CAA H2

**Fuel Available:** JET A1 (please note this is a limited supply and fuelling requirements must be pre-arranged in order to guarantee availability (if fuel booked for the Monday and not used, then half booked amount will be charged).

**Ground Transport:** Transport may be provided to and from the music festival upon request.

The Glastonbury Heliport is situated within an area of Restriction of Flying Regulations under Article 85 of the Air Navigation Order. This exclusion area is notified in Aeronautical Information Circular (AIC). Due to be published June 2023.

The heliport is therefore strictly Prior Permission Only (PPR) and all bookings must be made in writing by returning the fully completed booking form (Annex 3), Indemnity Form and to Polo Aviation Ltd, and confirmed by ourselves by e-mail.

## Approach and Departure Routing

With reference to:

- a) OS Map 183 Yeovil and Frome
- b) Guide map and photos (Annex 4).

All inbound aircraft should make blind calls on the Safety Com Frequency (135.480) not less than 5 miles from the helipad, Please state "Glastonbury Helipad" on all radio calls with this site.

To avoid noise disruption to the local community there is a narrow (0.5 nm) entry and exit corridor into the heliport described below. The separation between the inbound and outbound routes is North or South of the roundabout on A37 and A371 (grid ref ST62754134).

### For approach to Runway 09

Aircraft should route via point A, not more than 0.2nm North of the roundabout before entering the exclusion zone and make a short finals approach to Runway 09 to avoid overflying Pilton.

**RT Procedure:** A/C Callsign, at A for Glastonbury Helipad 09.

### For approach to Runway 27

Aircraft should route via point B, not more than 0.2nm South of the roundabout before entering the exclusion zone, and then staying South of the roundabout and North of the line of Pylons at all times, make an approach to Runway 27.

**RT Procedure:** A/C Callsign, at B for Glastonbury Helipad 27.

### For departure from Runway 09

Aircraft should route directly to point B, not more than 0.2nm south of roundabout, staying North of the line of Pylons and South of the roundabout at all times until clear of the exclusion zone.

**RT Procedure:** A/C Callsign, at B, Glastonbury Helipad Outbound

### For departure from Runway 27

Aircraft should make an immediate climbing right turn to avoid the over flying any buildings and the village of Pilton and then route directly to point A, not more than 0.2nm north of roundabout, staying North of the Roundabout until clear of the exclusion zone.

**RT Procedure:** A/C Callsign, at A, Glastonbury Helipad Outbound

When entering or departing the Exclusion Zone at Points A (north of Roundabout) or B (South of Roundabout), aircraft should be at 1,500 Feet (Bristol QNH) weather permitting.

During the Glastonbury Music Festival there will be in excess of 175,000 people in the Exclusion zone and therefore it is imperative that all aircraft strictly adhere to the routes described above.

**As a visual guide no aircraft should proceed South of the line of Pylons or West of the eastern edge of the village of Pilton at any time.**

**Please Note in addition Camp Kerala's helipad will operate south of the pylon Line, and RT reference "Kerala Helipad"**



### Minimum Weather Limits

Cloud Ceiling higher than 600 ft agl and more than 3km visibility

### Emergency Services Aircraft

Emergency services helicopters will be operating H24 over the music festival site and will have priority should the operational necessity arise.

To assist the operation of the National Police Air Service (NPAS), where possible all inbound and outbound aircraft should have their transponders switched on with mode C utilised.

### Noise Abatement

Pilots should always operate their helicopter in a manner that will minimise the disturbance caused to local residents. Always fly at the maximum permitted altitude compatible with the prevailing cloud conditions and controlled airspace. Please refer to the BHA Pilots Code of Conduct for more information. No flights other than emergency services will be permitted within the Restricted Area between the hours of 00:30 and 08:00 daily.

### Photographic and Filming Work

PPR is only for landing at the Heliport.

### Passenger Information

When your passengers are leaving the site, and returning to the Helipad, they may find the following information useful.

Blue vehicle gate is the closest to the helipad reception <https://what3words.com/victor.causes.resettle>. Once you meet the road Winding Lake Farms drive is opposite the bend in the road. Walk up the drive to Heliport Reception, and ask for the overland Transport to the Helipad. Should you wish to see more detail then it may be worth visiting [www.flyglastonbury.com](http://www.flyglastonbury.com) and click on the 'Location' page you can see a picture showing our location in relation to the festival site. Please remind passengers that they must allow plenty of time to get to the helipad as transfers can take longer on the Monday.

If you are staying backstage then the transport collection point is "Moonbow"  
<https://what3words.com/vessel.restriction.verve>

### This year we will require additional information upon booking:

1. Passenger Name
2. Passenger contact (preferably not a 3<sup>rd</sup> party)
3. Location / Camp they are staying
  - a. Address of Camp
  - b. Contact name for camp
  - c. Contact number for camp
  - d. Are they being collected from the Helipad by their accommodation providers.

Over the years we have found that a lot of passengers do not seem to know where they are staying and the drivers have to try and work it out, this has meant they have gone to the wrong place. Additionally, due to changes in the vehicle passes there may be some locations that are not accessible (especially on the Monday)

All overland transfer requests **must** come from the helicopter operator on the booking forms, to enable us to tie the final destination to the aircraft.

# Landing and Parking Fees 2023

## Helicopter Type

## Landing Fee

## Parking over 2 hrs per day

A 109	£470.00	£235.00
A 119	£470.00	£235.00
A 139	£730.00	£365.00
Bell 206 Jet Ranger	£310.00	£155.00
Bell 206L Long Ranger	£330.00	£165.00
Bell 407	£400.00	£200.00
Bell 222	£640.00	£320.00
Bell 429	£670.00	£335.00
Bell 430	£680.00	£340.00
Bell 505	£310.00	£155.00
Eurocopter EC120	£350.00	£175.00
Eurocopter EC130	£450.00	£225.00
Eurocopter EC135	£470.00	£235.00
Eurocopter EC145	£500.00	£250.00
Eurocopter EC155	£650.00	£325.00
Eurocopter AS350/H125	£390.00	£195.00
Eurocopter AS355	£420.00	£210.00
Eurocopter AS-365	£650.00	£325.00
H369	£310.00	£155.00
MD900	£470.00	£235.00
Robinson R22	£210.00	£105.00
Robinson R44	£310.00	£155.00
Robinson R66	£330.00	£165.00
Sikorsky S76	£730.00	£365.00
Sikorsky S92	£910.00	£455.00

Late night opening (After 20:00) by arrangement £900.00, No movements will be permitted between 00:30 and 08:00

Back stage Transport for Performers and those with the relevant passes £140.00 (subject to availability)

All prices are subject to VAT.

**Unless arranged in advance all charges for landing, parking must be cleared before arrival. Fuel must be paid in full by the aircraft operator / owner before departing from the heliport, unless a prior arrangement has been made with Polo Aviation Ltd. Payment can be made by credit or debit cards.**

## Annex 1

Copy of letter received from Glastonbury Festival.



To Whom It May Concern.

**Heliport Operation near Glastonbury Festival Site  
From 21st June to 26th June 2023**

I confirm that Glastonbury Festival Events Ltd (GFEL), of Worthy Farm, Pilton is the owner of Glastonbury Festival, and is licensed by Mendip District Council to hold the Glastonbury Festival 2023.

Glastonbury Festival Events Ltd has agreed that flyglastonbury.com (cutting Edge Events Ltd), a private company, completely independent of GFEL, may provide hospitality facilities for members of the music industry and festival performers, at a site adjacent to Worthy Farm and may provide transport to that site by helicopter. In providing this service at Windinglake Farm for people attending the Festival, flyglastonbury.com contracts with these customers and not with the Festival.

Polo Aviation Limited, as operators of the facility, will land and take off at the Pilton Heliport during the period stated above. Other aircraft operators may also use the Heliport upon receiving approval from Polo Aviation Ltd.

The Festival is pleased that flyglastonbury.com will be operating again this year and has been advised by that company that all visiting aircraft will be flown in accordance with the procedures notified by the CAA and those contained within the Pilton Heliport Briefing.



Position Director

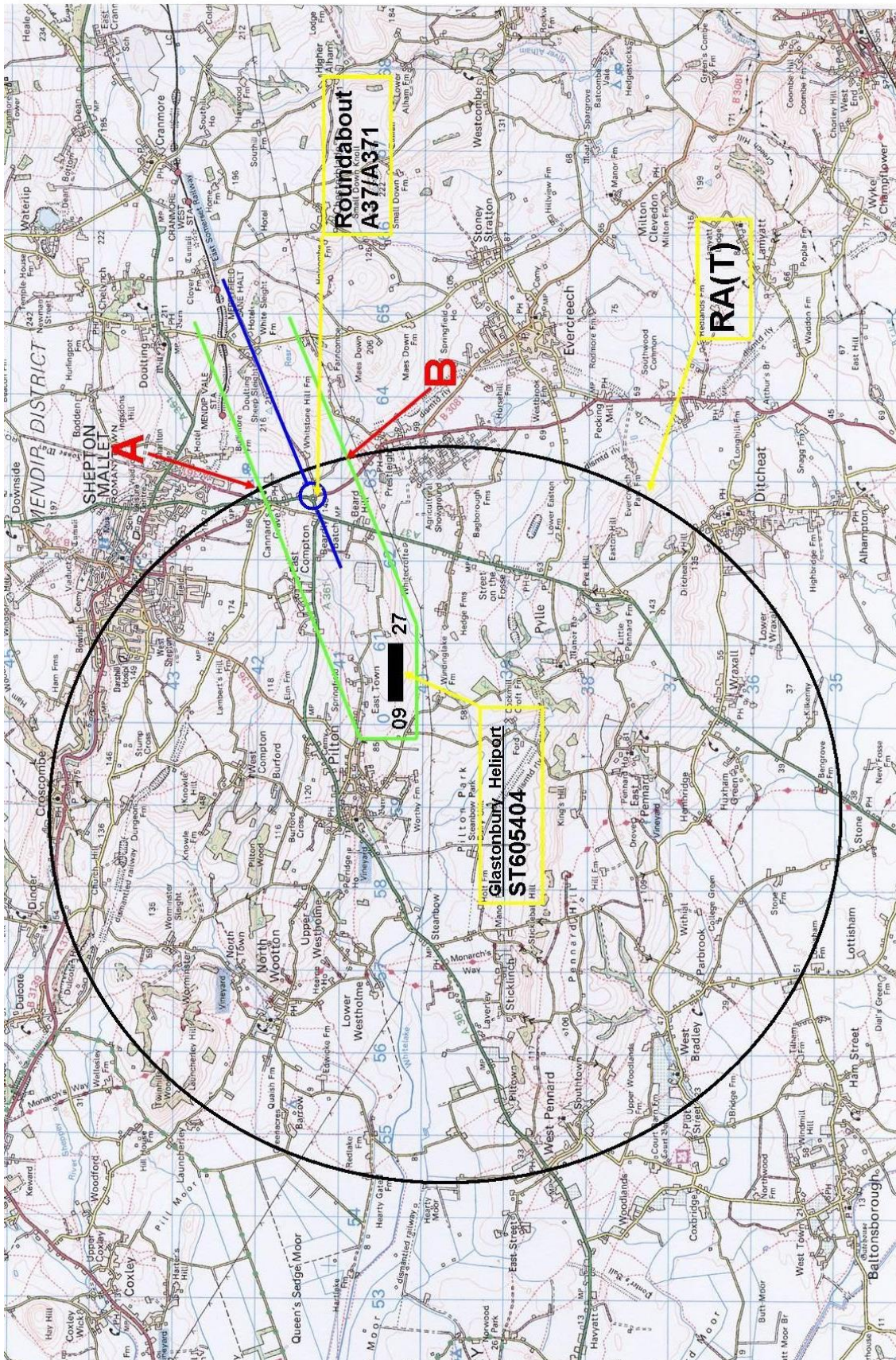
Glastonbury Festival Office

.....23.13.2023

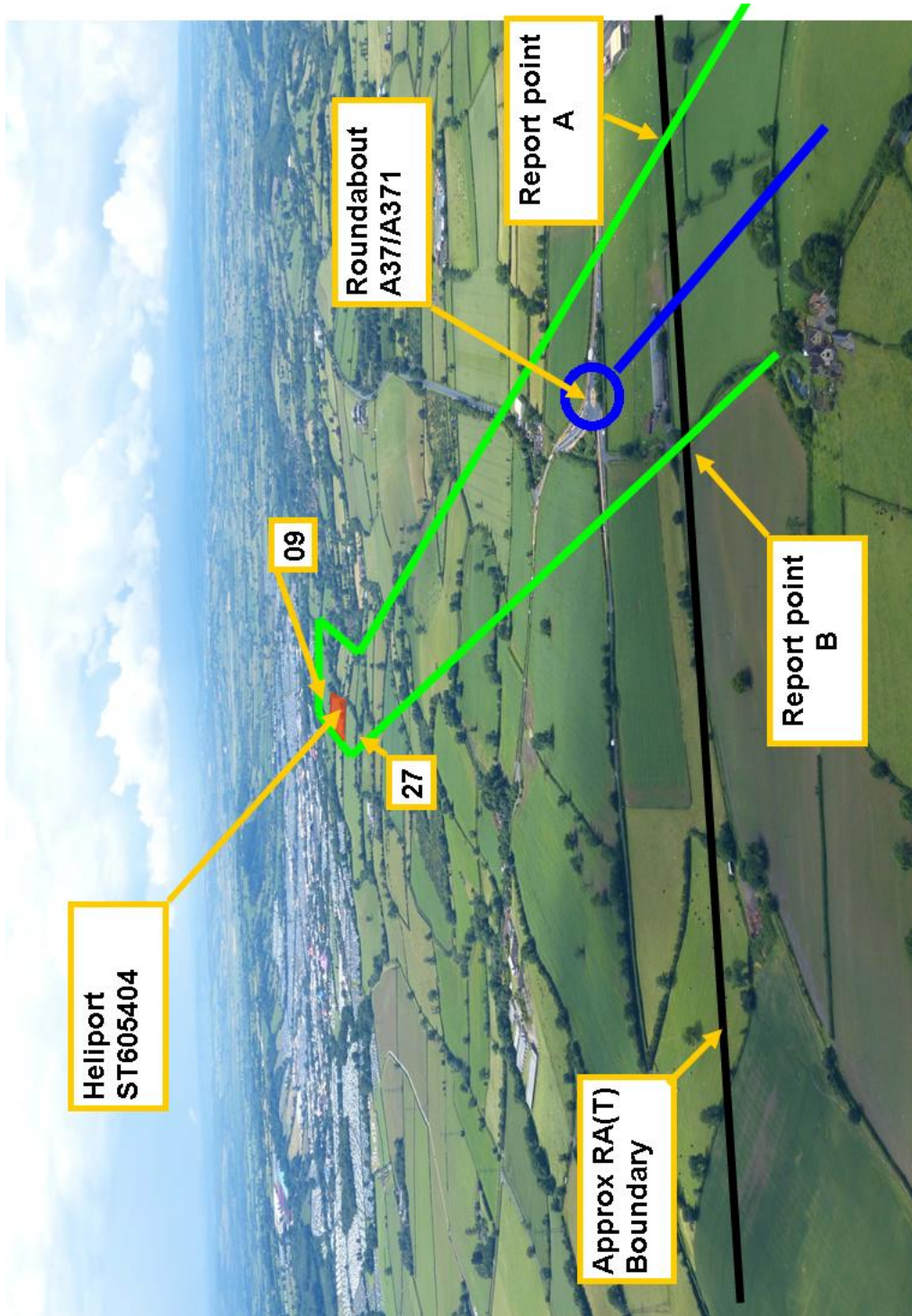


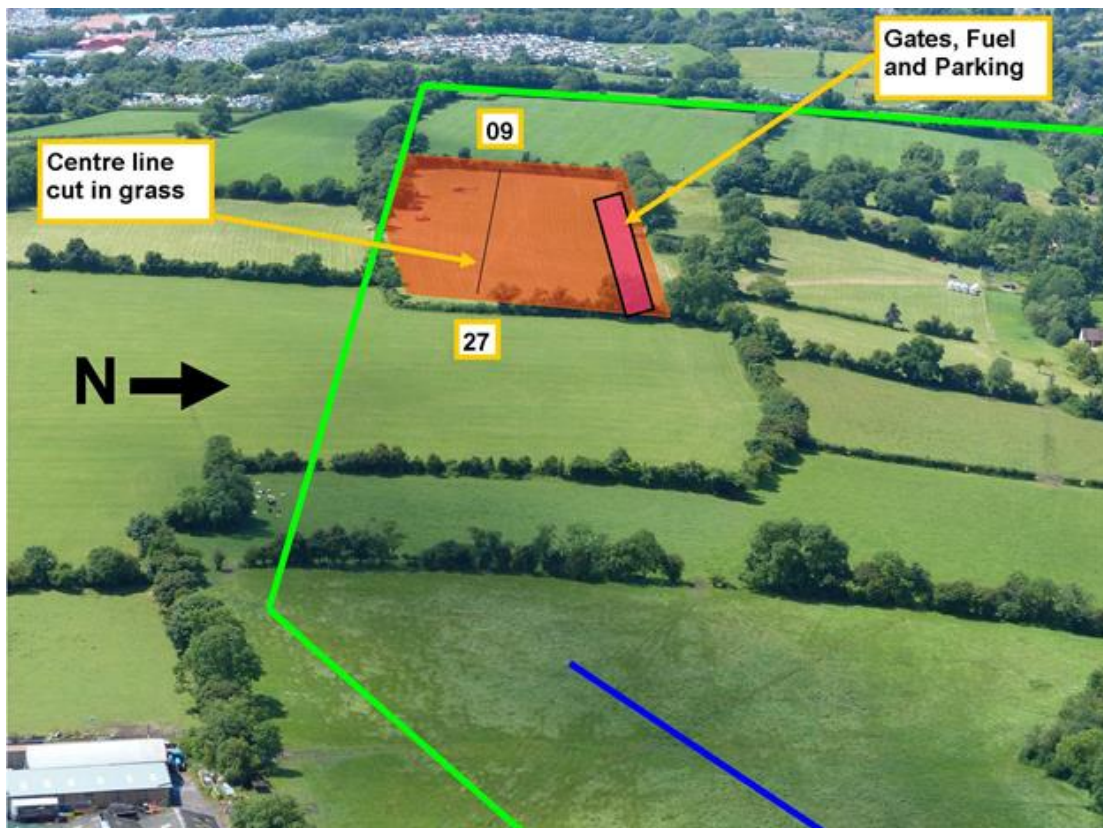
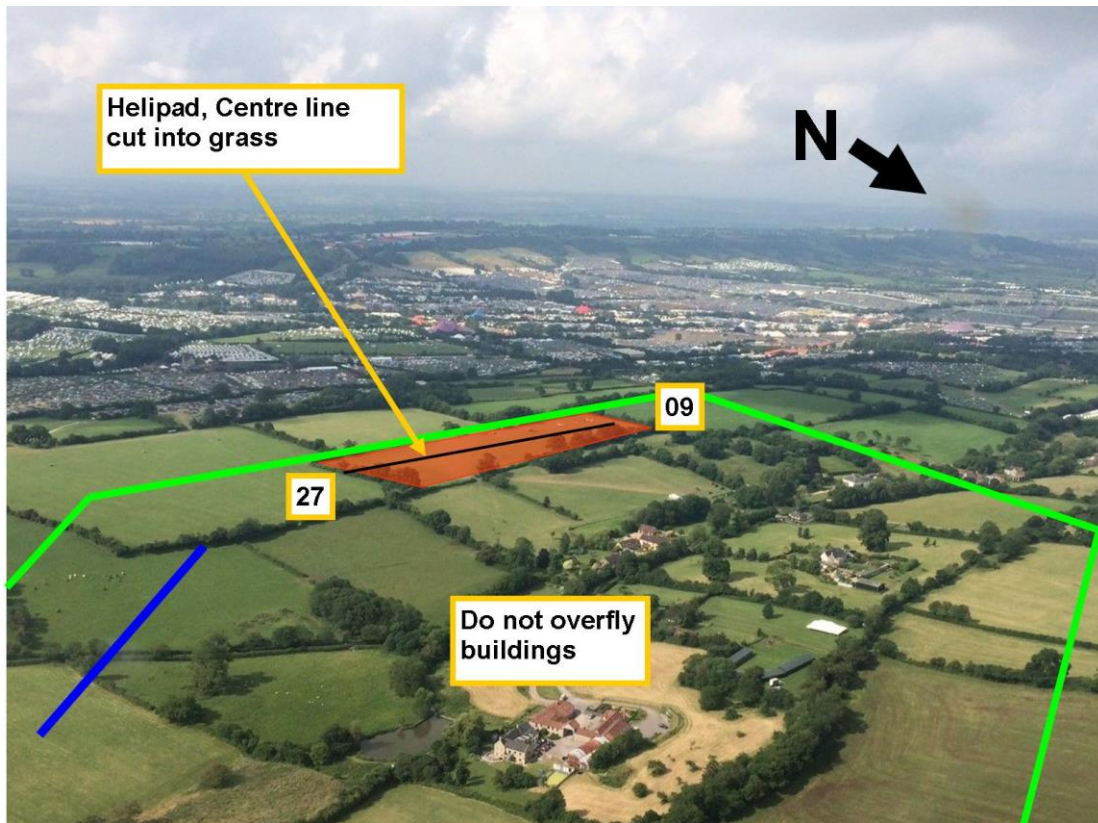
**Glastonbury Festival Events Ltd., Worthy Farm, Pilton, Shepton Mallet, Somerset BA4 4BY (Registered office)**  
Tel. 01749 890470 Fax 01749 890285 E-mail worthy@glastonburyfestivals.co.uk VAI No 791 1254 33  
Registered in England and Wales • Company no. 04348175



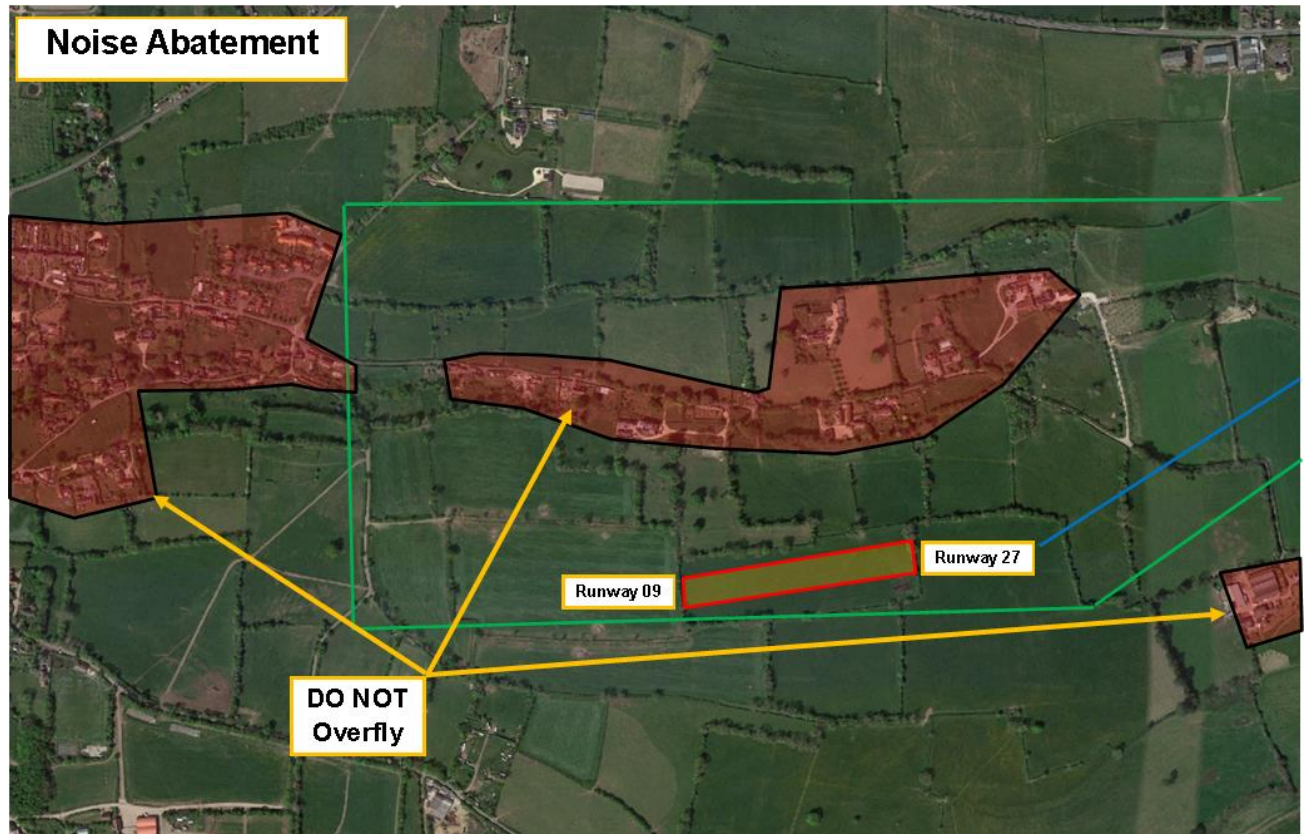














(This page is intentionally blank)

## Annex 3



# Insurance Indemnity Form

In consideration of being granted permission to use the ground services and facilities at the Glastonbury Heliport we agree to indemnify the parties shown below for all loss of or damage to property or bodily injury to any person.

- A) Polo Aviation Ltd
- B) Cutting Edge Events Limited
- C) Mr Gordon Butt, Townsend Farm, Pilton
- D) The employees, Servants, or agents of A, B & C above

We confirm that we have, in force, Third Party (including passengers) Insurance for a limit of not less than £5,000,000 (pounds sterling) for any one accident, and such policy/ies have been endorsed to include the above named as additional assured, subject to a two-way cross liability clause. We further confirm that a "hold harmless and waiver of rights of subrogation" has been endorsed on the hull policy in favour of the above named, subject to policy coverage, terms, conditions, limitations and exclusions.

### A) To be completed by the Operator / Owner

Signed: .....

Position in Company: .....

Operator / Owner: .....

Date: .....

Phone: .....

### B) To be completed by the appointed insurance brokers

Signed: ..... Date: .....

For: ..... Insurance Brokers

Policy Number .....

Period of Insurance: .....

Aircraft Registration: .....

Please e-mail this completed form to Polo Aviation Limited [mail@poloaviation.com](mailto:mail@poloaviation.com)